

*Keeping you “in the know” at the office or on the go.*

## **OVERVIEW:**

Contractors, consultants and building owners are increasingly aware of the need for remote monitoring of elevator systems. The ability to access key information related to an elevator’s health and status has become crucial for ensuring both safety and efficiency in today’s buildings. By implementing a remote monitoring system, facility managers can continuously track the performance and condition of elevators in real-time, allowing for prompt identification and resolution of potential issues before they escalate into serious problems. This proactive approach not only minimizes downtime and service interruptions but also enhances the overall safety of the elevator system, reducing the risk of accidents caused by malfunctioning equipment. Additionally, remote monitoring facilitates data collection and analysis, which can be used to optimize maintenance schedules, improve energy efficiency, and extend the lifespan of the elevators. In a world where timely and reliable building services are increasingly important, remote monitoring provides a vital layer of oversight that supports smooth and safe operation of vertical transportation systems.



## **THE VANTAGE SOLUTION:**

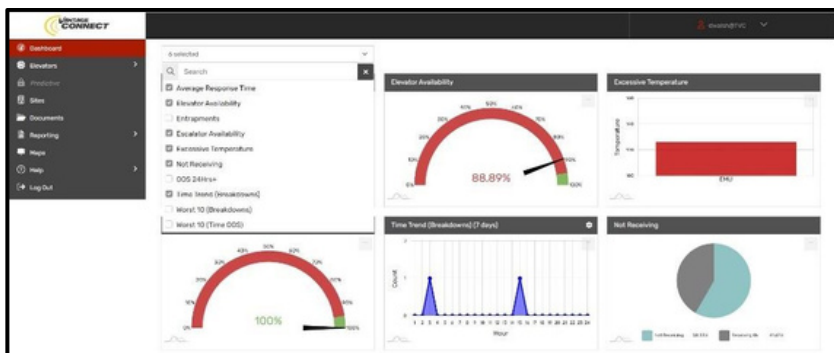
Vantage Connect, our cloud-based monitoring platform, empowers you to manage your assets portfolio using simple, intuitive color-coded graphics in real-time with instant alerts straight to your device. You can now experience unprecedented transparency of asset performance and reliability with advanced monitoring. Access to Vantage Connect will be made possible with Vantage controllers (EC Pixel, GAL eHydro, GALaxy4) with a Gateway device, 3rd party controllers with a sensor-based device (date of release TBD pending CSA approval) or escalator and other elevator devices with a Gateway Mini.

**Benefits:**

- Ability to improve trouble call **response times** **Reduce** critical events such as **asset shutdowns**
- Improve the **lifecycle costs** of your assets. **Instant alerts** sent direct via email and/or text message ensuring building management and elevator companies will never miss a shutdown or elevator entrapment event.

- **Comprehensive performance analytics** using historical data produces system reporting including comparative performance of portfolio units, availability, and equipment summary.

- Service technicians can now be equipped with **real-time data** benefiting from Vantage Connects' innovative algorithms leading to **predictive intervention** reducing unplanned shutdowns. Technicians will simply login once onsite to register the reason for a particular service visit.



The graphical dashboard shows an at-a-glance view of key performance indicators such as equipment availability, equipment out of service, site performance, alarm trappings and much more. Customize your own dashboard to suit your requirements using the simple drag and drop features.

Map overview illustrates a graphical representation of site availability around the world. Click on each icon to zoom in to gain more detailed information.

