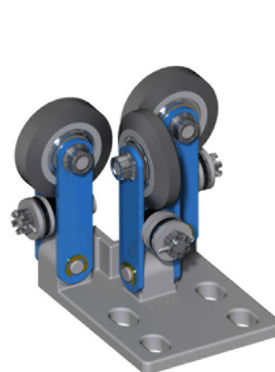
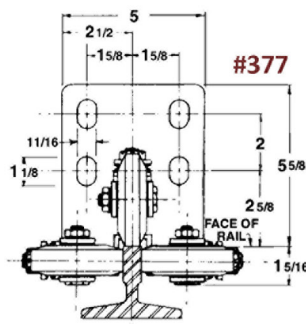


# H-W EQUIPMENT

## Guide Shoes

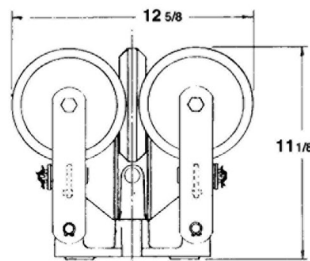
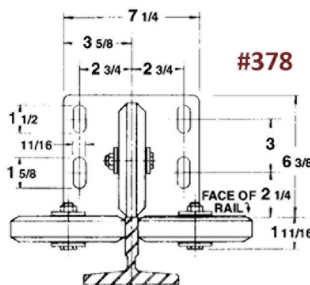
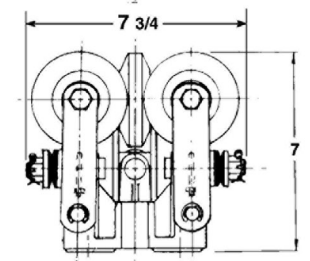
### Roller Guide Shoes



Model 377



Model 378



#### OUTSTANDING FEATURES BUILT INTO THESE H-W ROLLER GUIDES

- WIDER ROLLERS FOR RAIL SIDES EXTEND LIFE.
- SEALED PRELOADED BEARINGS.
- DOUBLE ARMS WITH SPRING IN CENTER PREVENT TWISTING.
- CASTING WITH WEBBING FOR STRENGTH — PRECISION MACHINED TO ASSURE ALIGNMENT OF THREE FACES.
- HIGH THROAT FOR POSSIBLE TIRE FAILURE.
- SET SCREW FOR EASE OF ALIGNMENT.
- HEAVY DUTY (NO DIAPHRAGM) POLYURETHANE PRECISION ROLLER.
- BONDING WITH LATEST TECHNOLOGY TO INSURE NON-SEPARATION OF POLYURETHANE FROM WHEEL HUB.
- STANDARD INDUSTRY MOUNTINGS.
- DOUBLE ACTION TENSION DEVICE FOR "LOAD CONSCIOUSNESS" IS FACTORY SET...NO FIELD ADJUSTMENT REQUIRED AND NO STOPS NECESSARY.

Roller Guide Shoes from H-W are "Load Conscious!"

The unique tension system actually causes the rollers to "feel" or "sense" the rail and adjust for loads near the balanced point and for rail misalignment, while a strong tension takes over to prevent excessive movement as heavier loads are placed off center. Rollers will never leave the rail with this "guide" and the outstanding tension system allows ultra long life of the roller wheels.

For higher capacities, the ultimate choice is the Hollister-Whitney four-wheel guides. Four wheels control more of the side to side movement.

H-W EQUIPMENT

Guide Shoes

Roller Guide Shoes

NOTE: CONTACT H-W FOR CAPACITY AND SPEEDS GREATER THAN SHOWN

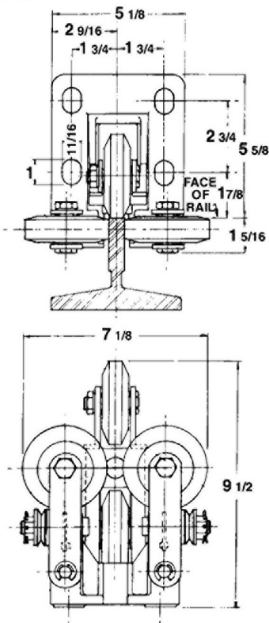
MODEL NO. & SHOE TYPE	WHERE USED & RAIL SIZE	APPLICATION FOR Typical Elevator Installation			WEIGHT SET OF 4
		TYPE LOADING	MAX. CAR CAP.	CAR SPEED OF	
377 3-3 1/4" Rollers	Car	Pass.	2000	300	55#
	Cwt.	Pass.	5000	600	
378 3-6" Rollers	Car	Pass.	4000	600	110#
	or 3/4" (EXCEPT 8#)	Class "A" Frl.	4000	200	
379 4-3 1/4" Rollers	Car	Pass.	3500	300	75#
	Cwt.	Pass.	8000	1000	
380 4-6" Rollers	Car	Pass.	8000	1000	175#
	or 3/4" (EXCEPT 8#)	Class "A" Frl.	6000	200	

Note: Models 378 & 380 are not designed for use on 8# rails.

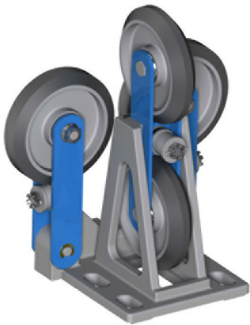
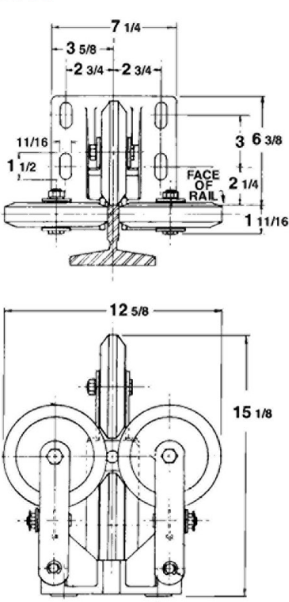


Model 379

#379



#380



Model 380