

H-W EQUIPMENT

Guide Shoes

Rigid Guide Shoes

A complete line of heavy-duty rigid guide shoes with cast-iron liners and optional lubricator assemblies is available. Shoe assembly #371 will mount on a car sling with 5" stiles without needing shoe plates. The shoe assemblies #375 and #376 will mount on a standard H-W counterweight frame without needing shoe plates. All other shoes need shoe plates.

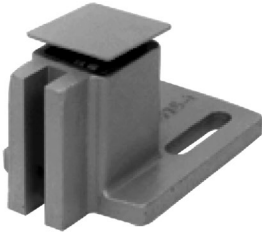
Model 371



Model 375



Model 376

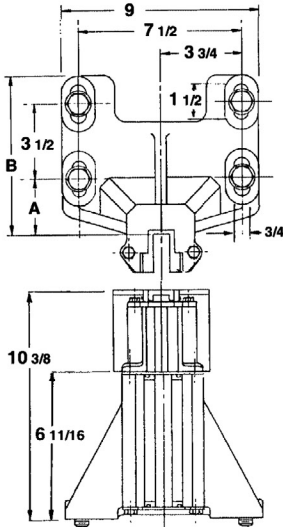


Model 381

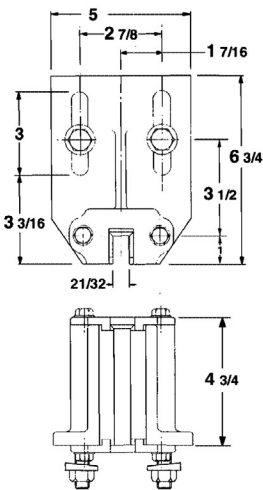
MODEL 371 ONLY			
RAIL SIZE	"A"	"B"	
8#	3 1/8	7 3/4	
11# - 30#	2 1/2	7 1/8	

	WHERE USED MAX. CAPACITY	RAIL SIZE	SHOE TYPE	SHOE	LINER MATERIAL	WEIGHT SET OF 4
CAR	Pass or Frt. 6000# Cap.	5/8" Thru 1 1/4"	Rigid C.I.	371	6" Cast Iron	120#
	Freight 12000# Cap.	5/8" Thru 1 1/4"	Rigid C.S.	371	6" Cast Iron	124#
	Freight 20000# Cap.	1 1/8", 1 1/4"	Rigid C.I.	381	10" Cast Iron	250#
CWT.	8000#	5/8"	Rigid	375	4" Nylon or C.I.	40#
	12000#	5/8"	Rigid	376	No Liner	45#
Plates and mounting hardware for above						50#

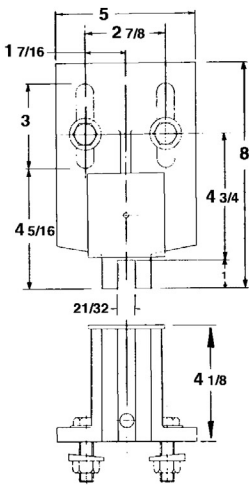
#371



#375



#376



#381

