	Document Name	Date	Rev.	Page	Bulletin
	Brake Rectifier Panel Bulletin	1/2/25	A	1 of 1	1160S

## **Bulletin #1160S Content**

1. Hollister-Whitney Brake Rectifier Panel Part Numbers and Information
2. Wiring Diagram – Single Phase Rectifier with Transformer (HW P/N: 10019-T)
3. Wiring Diagram – 3-Phase Rectifier with Transformer (HW P/N: 10019-1-T)

## **Hollister-Whitney Brake Rectifier Panel Part Numbers and Information**

*Brake Panels*



H-W Part No	GAL Part No	Description
10019	BRK-0044N	Brake Panel, Single Phase Rectifier
10019-T	BRK-0045N	Brake Panel, Single Phase Rectifier With Transformer
10019-1	BRK-0046N	Brake Panel, Three Phase Rectifier
10019-1-T	BRK-0047N	Brake Panel, Three Phase Rectifier With Transformer

Contained in this document are the wiring diagrams of each of the brake rectifier panels listed above.

**Take note of any specific notes or detailed requirements listed on any of the wiring diagrams.**

11

12

13

14

15

A

B

C

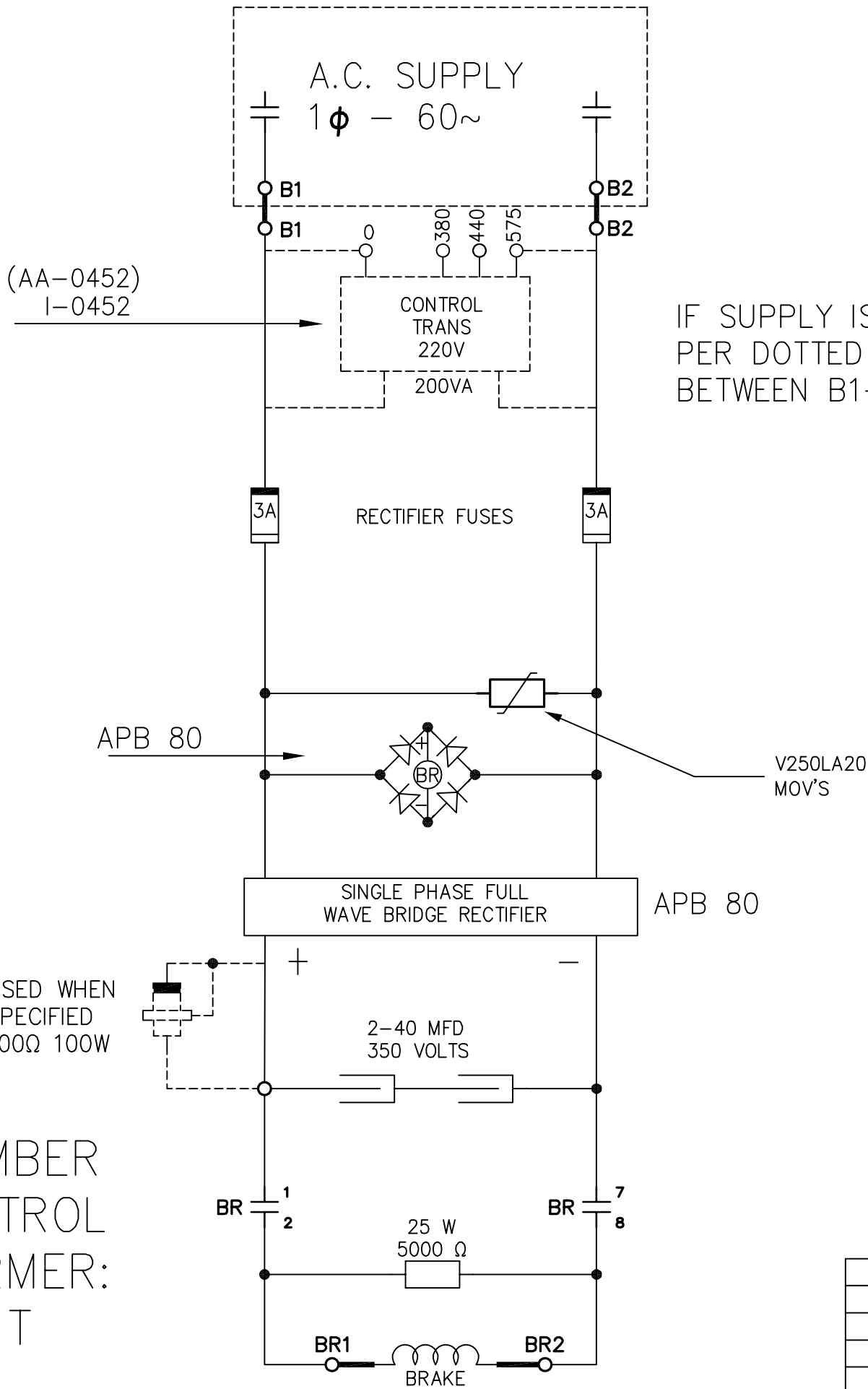
D

E

F

G

H



PART NUMBER  
WITH CONTROL  
TRANSFORMER:  
S-10019-T

NOTE:  
CONTACTS & TERMINAL INSIDE DOTTED LINE ARE  
ON EXISTING A.C. CONTROLLER. BOTH SUPPLY LINES  
SHOULD BE OPENED AS INDICATED.

REVISED 5/21/75:  
"BR" RELAY WITH COIL 5693 REPLACED WITH FABRICATED  
RELAY USING COIL S6438-23000T 39W AND RELAY  
RECTIFIER KBH 2506

REVISED 11/15/66:  
ADDED OPTIONAL COOLING RESISTOR

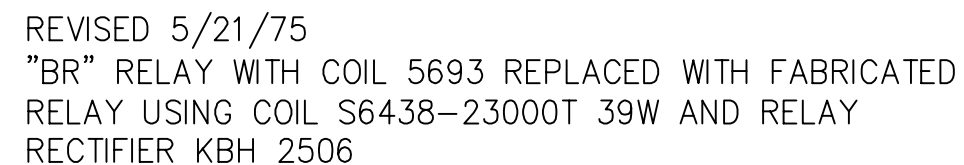
REVISED 4/11/66"  
ADDED CONDENSER

REVISED 2-17-65:  
RETRACED AND ADDED CONTROL TRANSFORMER  
AS OPTIONAL DEVICE.

					<b>G.A.L. MANUFACTURING CORP.</b> 50 E. 153rd STREET BRONX, N.Y. 10451	DRAWN BY E. YANEZ	DATE 8/11/2017
						ENGINEER E. YANEZ	SHEET 3 OF 11
						SCALE	SIZE 11" X 17"
						PART No.	REV
						DOCUMENT No. S-10019	1
REV	DESCRIPTION	DATE	HDT	WIRING DIAGRAM FOR REPLACING A.C. BRAKE WITH HOLLISTER WHITNEY D.C. BRAKE			

H

15



				 <b>G.A.L. MANUFACTURING CORP.</b> 50 E. 153rd STREET BRONX, N.Y. 10451	DRAWN BY E. YANEZ	DATE 8/11/2017
					ENGINEER E. YANEZ	SHEET 3 OF 11
					SCALE	SIZE 11" X 17"
				WIRING DIAGRAM FOR REPLACING A.C. BRAKE WITH 16"—18" OR 20" HW D.C. BRAKE	PART No.	REV
					DOCUMENT No. S-10019-1	1
REV	DESCRIPTION	DATE	HDT			