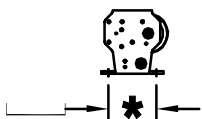
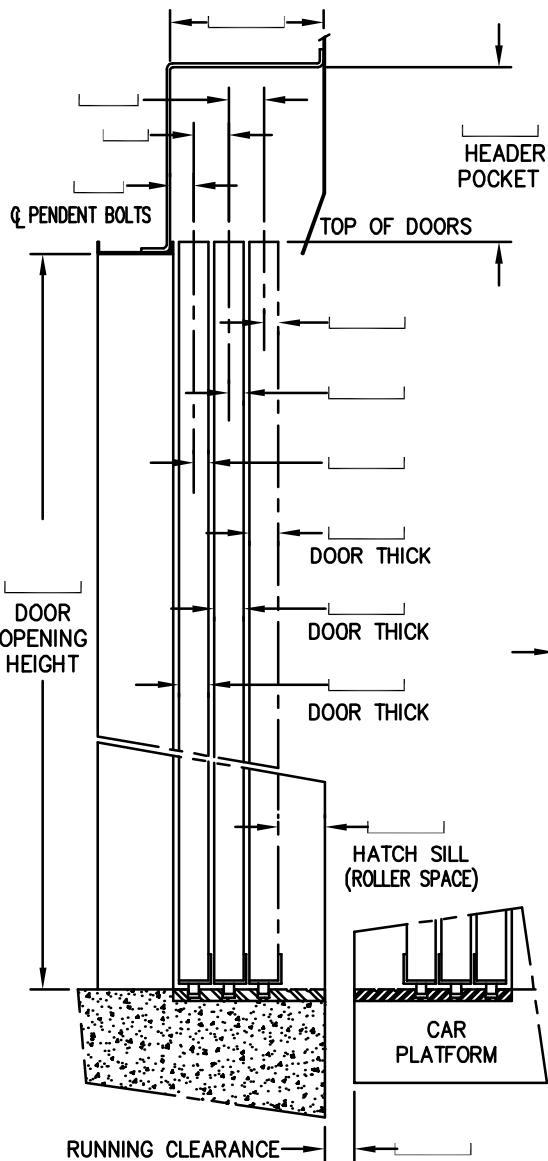
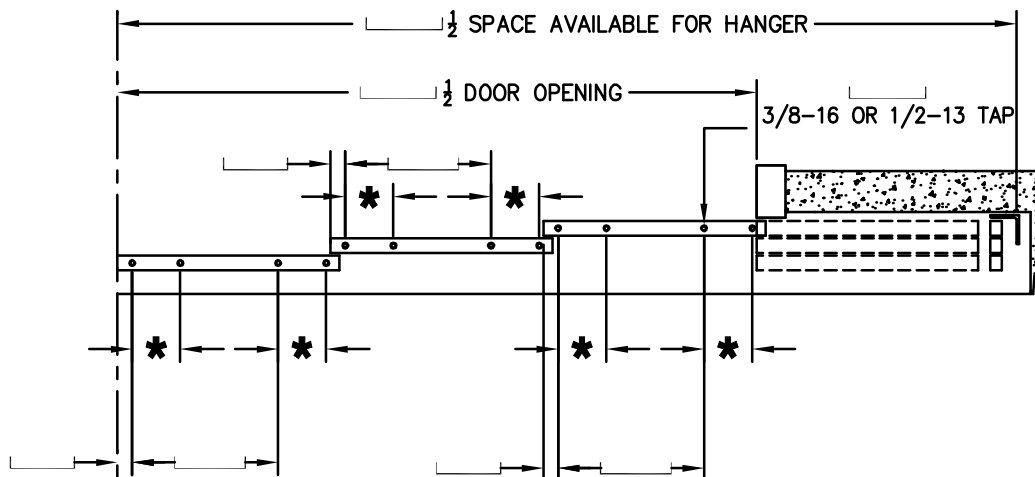


CAR NAME/No. _____

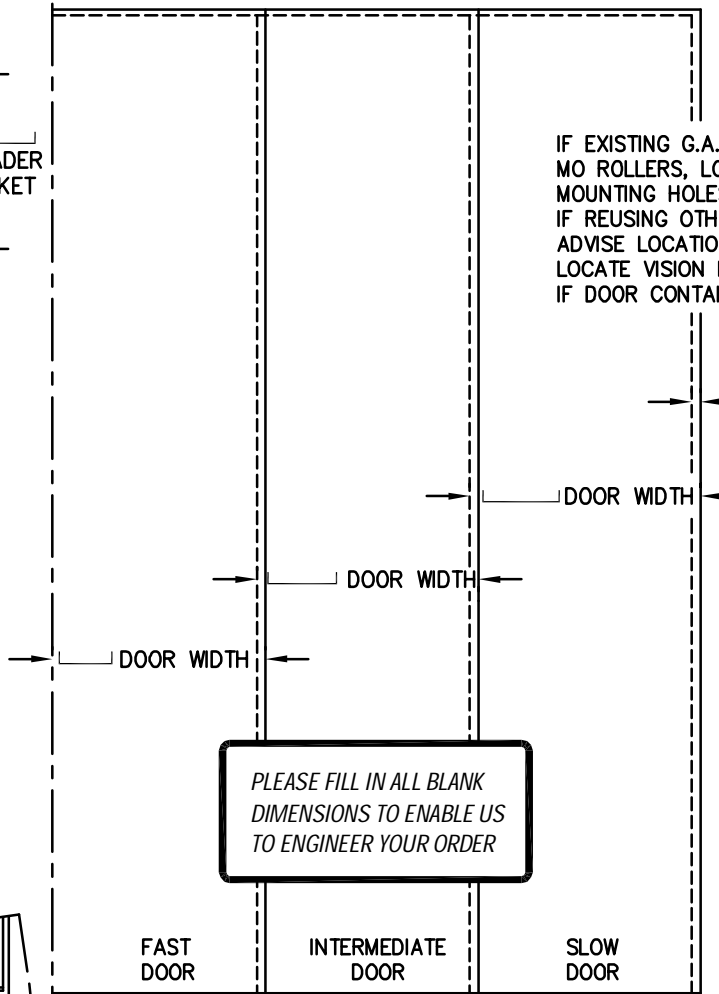
G.A.L. STANDARD SHEAVE MOUNTING HOLES ARE 4 1/8 C WITH 3/8 BOLTS. THE FOLLOWING SIZES ARE ALSO AVAILABLE: (3 3/4)(4)(4)(4)(4)(4)(4) IF OTHER DIMENSION PLEASE SPECIFY.



Q OF OPENING



IF EXISTING G.A.L. NO ROLLERS, LOCATE MOUNTING HOLES. IF REUSING OTHER'S ADVISE LOCATION. LOCATE VISION PANEL IF DOOR CONTAINS ONE.



PLEASE FILL IN ALL BLANK DIMENSIONS TO ENABLE US TO ENGINEER YOUR ORDER

REV	DESCRIPTION	DATE	ECN



G.A.L. MANUFACTURING CORP.
50 E. 153rd STREET BRONX, N.Y. 10451

DRAWN BY E. NUESI	DATE 02/02/2017
ENGINEER	SHEET OF
SCALE	SIZE

EXISTING HATCH CONDITIONS THREE SPEED DOORS CENTER PARTING
- FIELD SURVEY FORM -

PART No.	REV
DOCUMENT No.	
3SPCP-HATCH	